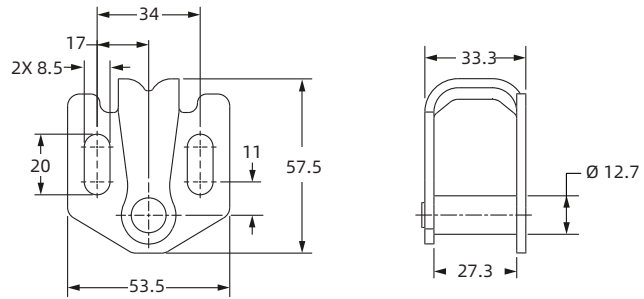
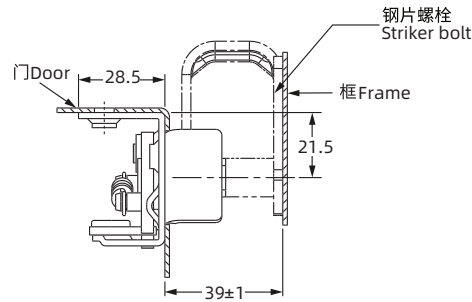
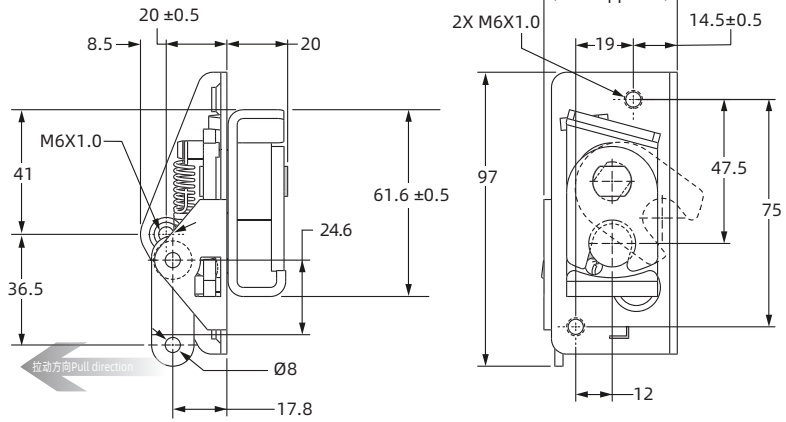
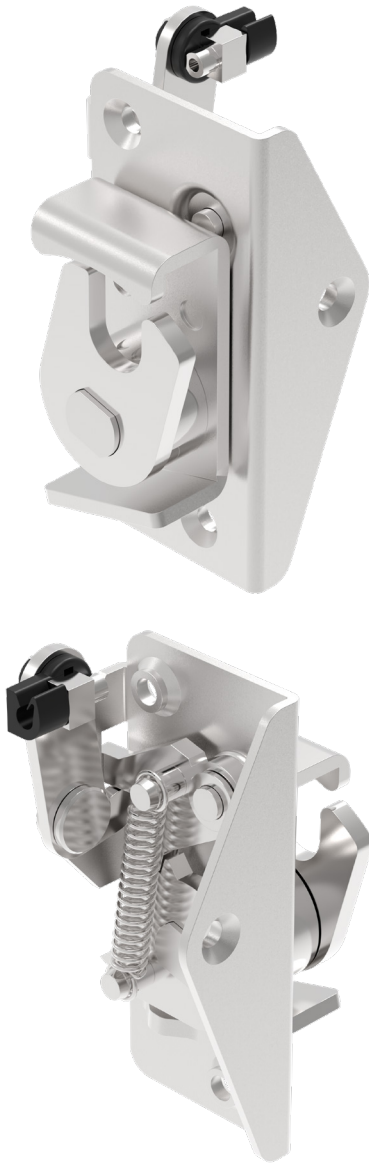


Rotary latch

I-3008

双级 (图示为左侧驱动装置)
Two Stage (Left hand actuation shown)



选型 Model selection

1. 左侧 Left side
2. 右侧 Right side

3008-SI-10

10. 碳钢镀锌 Galvanized iron
A1.SUS304

1. Material and surface treatment:
Main body: Carbon steel galvanized or
SUS304

1. 材质及表面处理:
主体: 碳钢镀锌或 SUS304

如需获得产品 3D 模型图，请联系 WWW.FORNDLOCK.COM