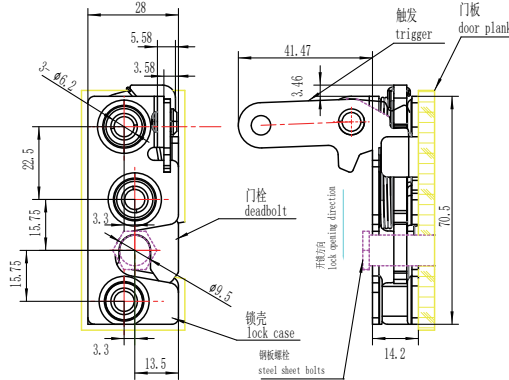
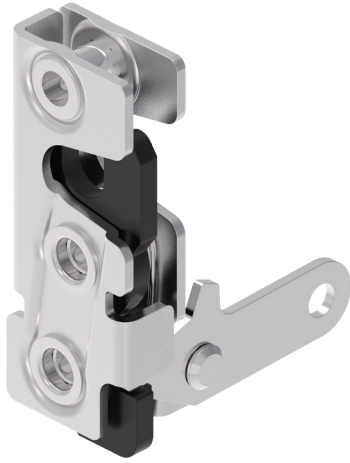


Rotary latch

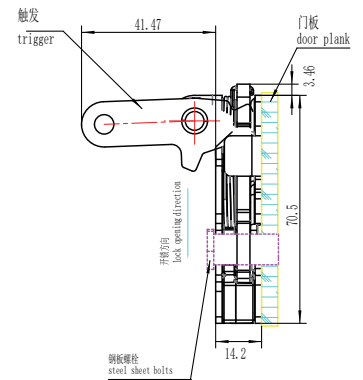
I-3009



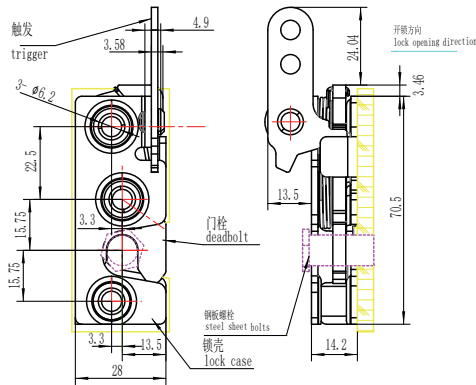
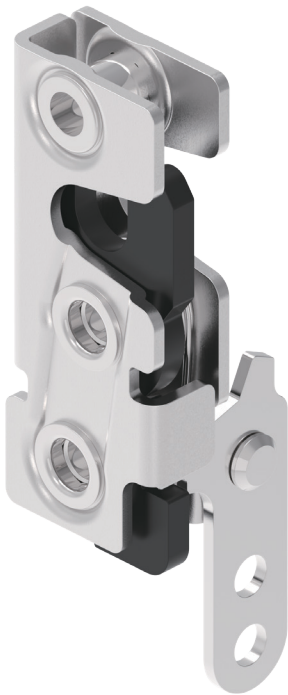
单级-左侧 垂直驱动  
Single stage-Left side  
Vertical drive



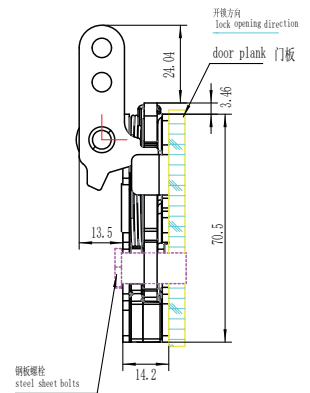
带减震器型号  
Integrated Bumper Version



单级-左侧 直列驱动  
Single stage-Left side  
Inline drive



带减震器型号  
Integrated Bumper Version



## 选型 Model selection

1. 单级，左侧 Single stage, Left side
2. 单级，右侧 Single stage, Right side
3. 双极，左侧 Double stage, Left side
4. 双极，右侧 Double stage, Right side

1. 顶部驱动 Top drive
2. 底部驱动 Bottom drive
3. 垂直驱动 Vertical drive
4. 直列驱动 Inline drive
5. 把手型驱动 Handle drive

**3009-SI-BL-10**

10. 碳钢镀锌 Galvanized iron  
A1.SUS304

1. Φ6.2 通孔 Through-hole
2. 1/4 -20 螺纹 Screw thread
3. M6x1 螺纹 Screw thread

1. 标准 Standard
2. 带减震器型号 With shock absorber

1. Material and surface treatment:  
Main body: Carbon steel galvanized or  
SUS304

1. 材质及表面处理:  
主体: 碳钢镀锌或 SUS304

如需获得产品 3D 模型图，请联系 WWW.FORNDLOCK.COM